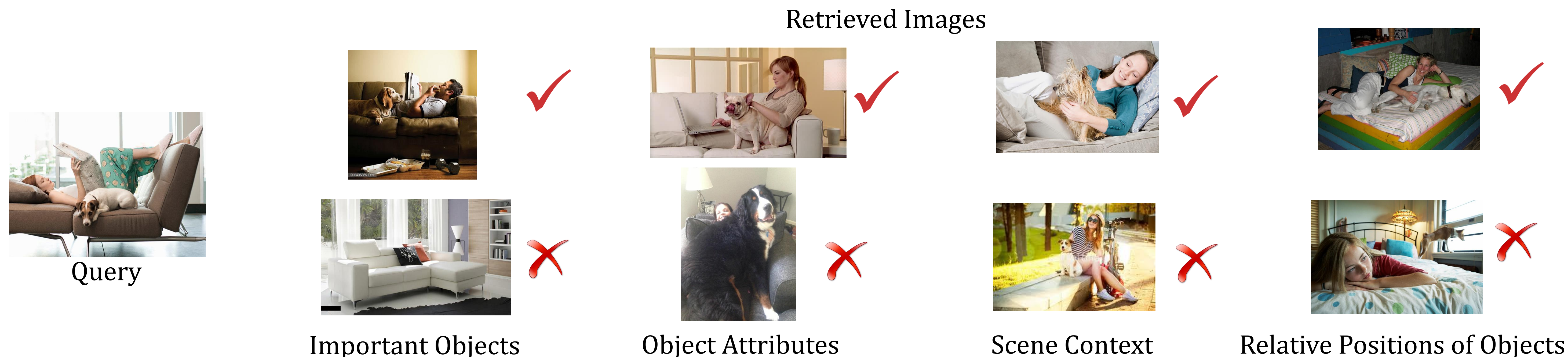
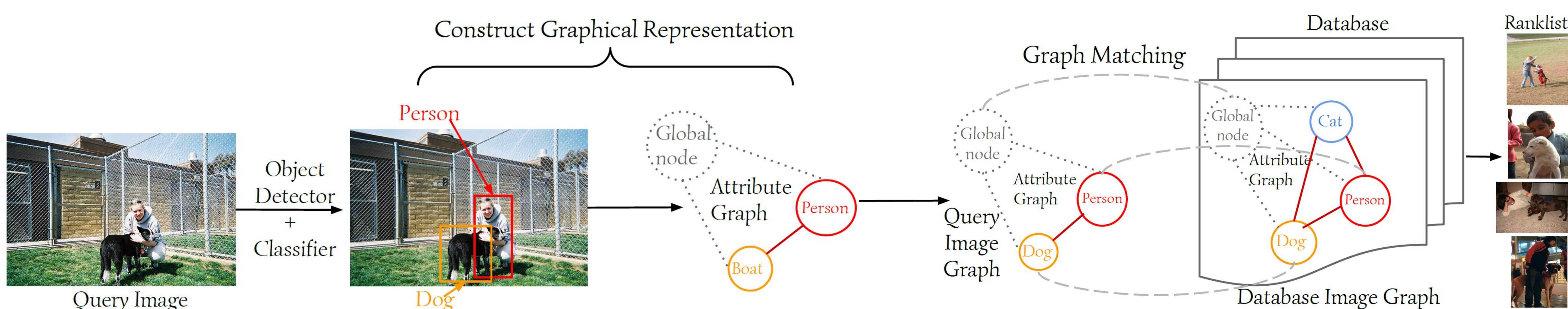


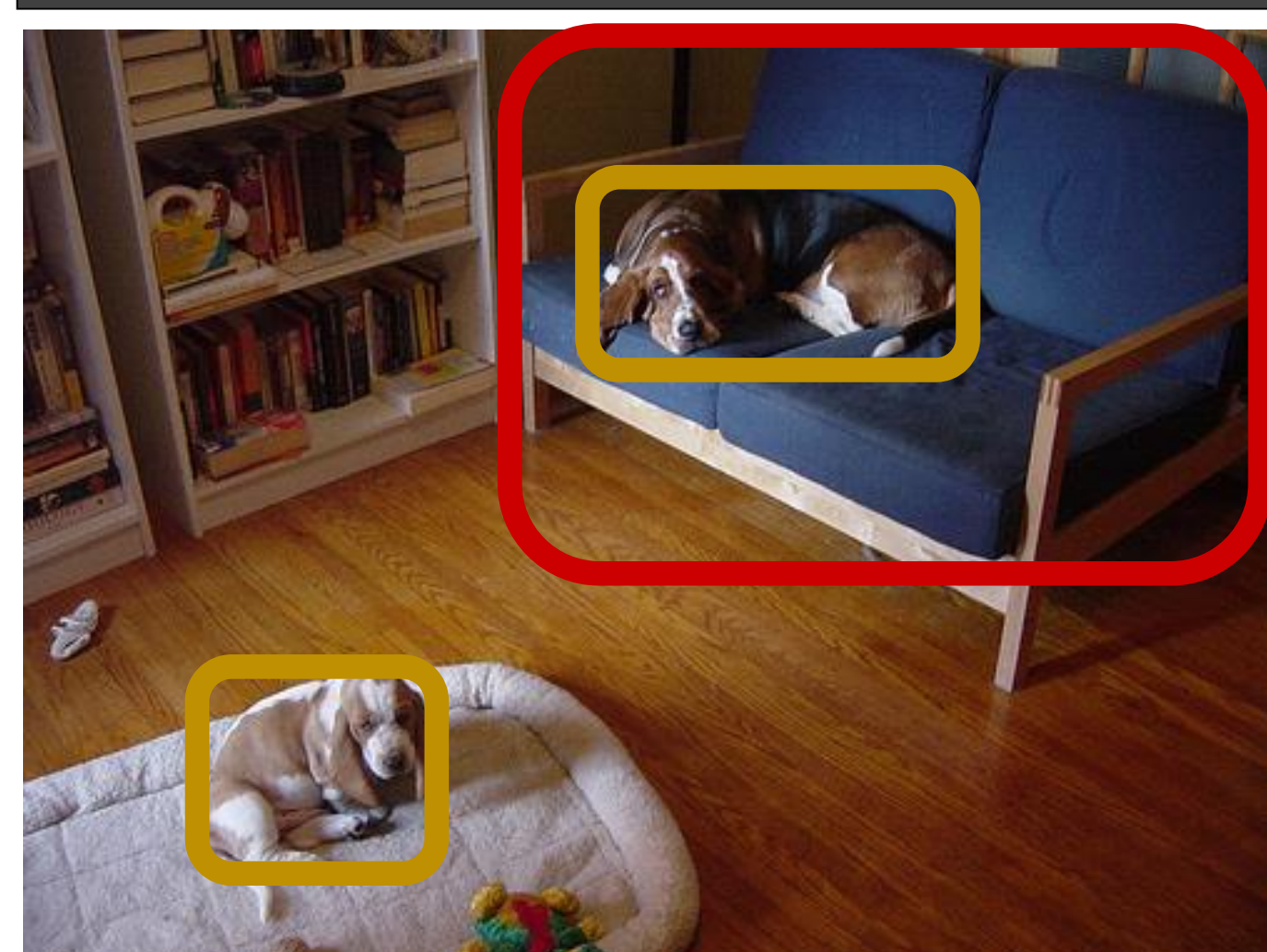
Motivation



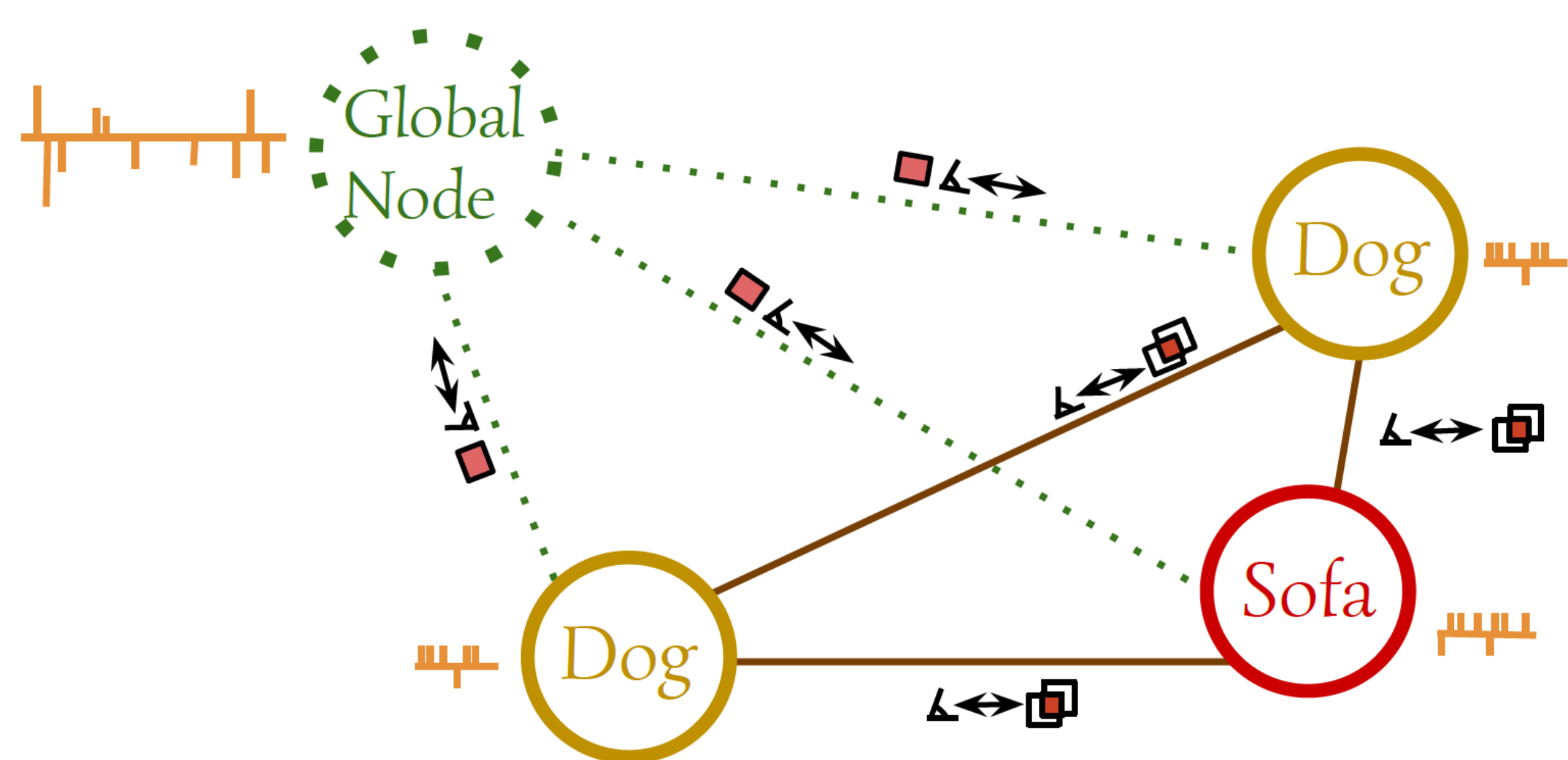
Overview



Attribute-Graph



- Node Attributes
- Node Area
- Edge Orientation
- Edge Magnitude
- Overlap Area



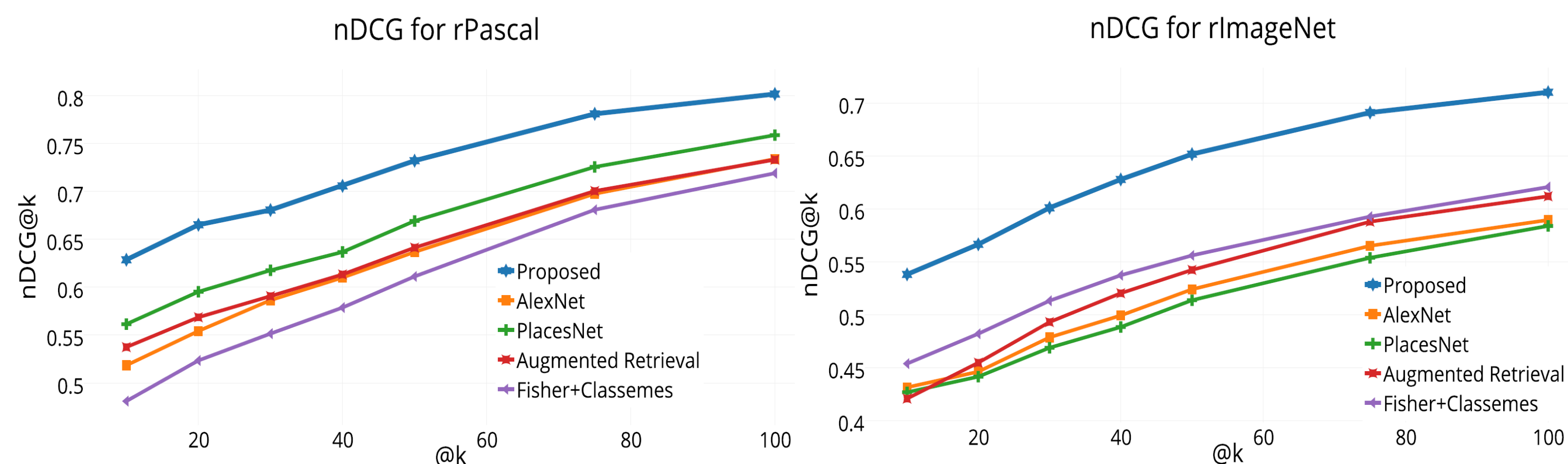
An image and the corresponding Attribute-Graph

Databases

Database	No. of Queries	Average References per query	No. of Indoor scenes	No. of Outdoor scenes	Average Objects per query
rPascal	50	180	18	32	4
rImageNet	50	305	14	36	8

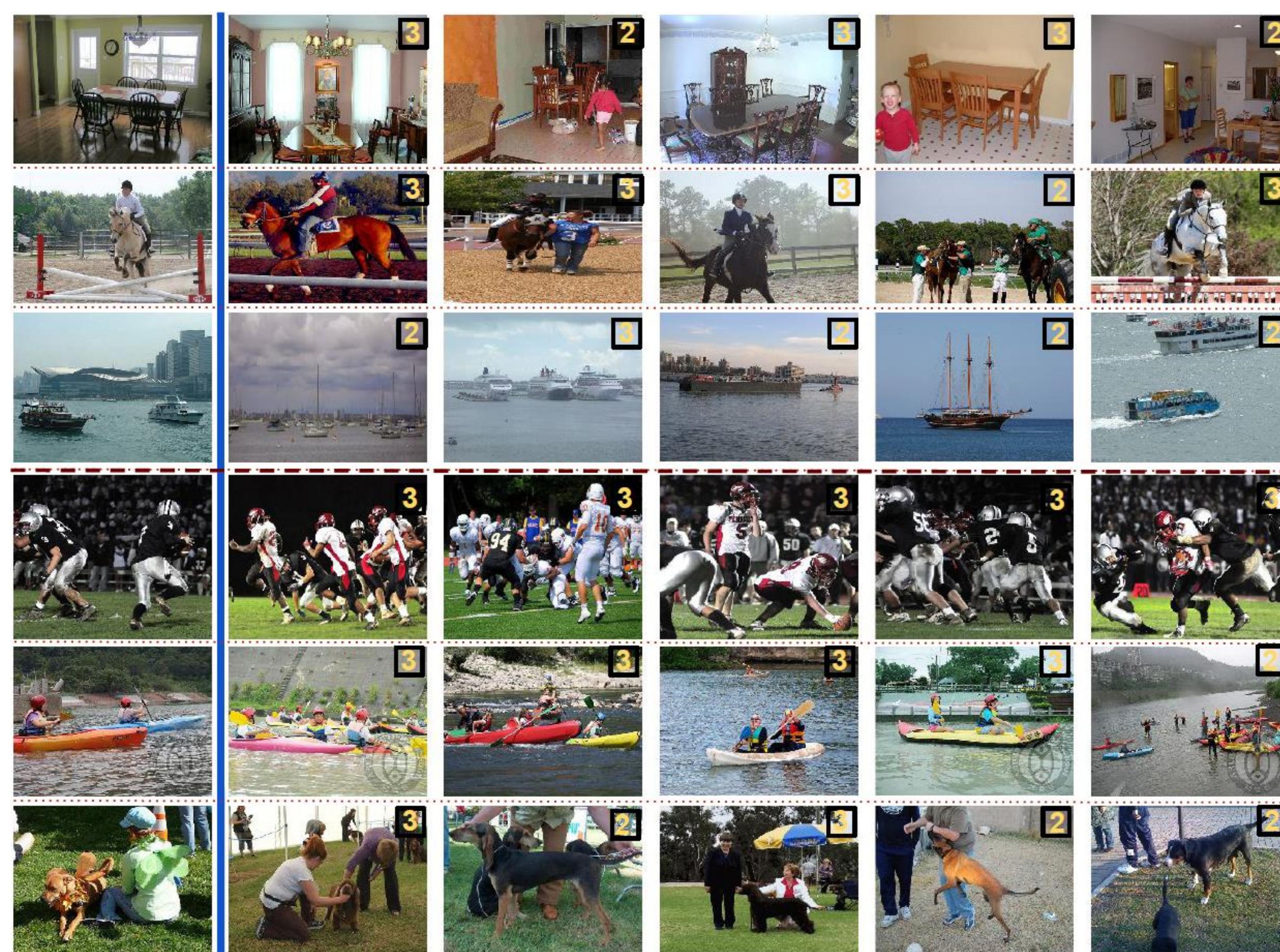
- Each reference image was annotated as *excellent*, *good*, *fair* or *irrelevant* with respect to a particular query
- Final score was determined by taking median of 5 annotations

Quantitative Results



nDCG comparison against Ranking truncation level 'k' for rPascal & rImageNet

Qualitative results



Ranking results for the Proposed method: Column 1: Queries; Columns 2-6: First 5 retrieved images. Numbers in the corners : User annotations

Publications

Prabhu, Nikita, and R. Venkatesh Babu. "Attribute-Graph: A Graph based approach to Image Ranking." ICCV, 2015.

